



Standard Programme – High Performance Holder

Starter-Kit: HPH inclusive reducing sleeves

HPH – Kits for maximum flexibility!

ADVANTAGE NO. 1

Thermal stability up to
170 °C

Excellent vibration damping

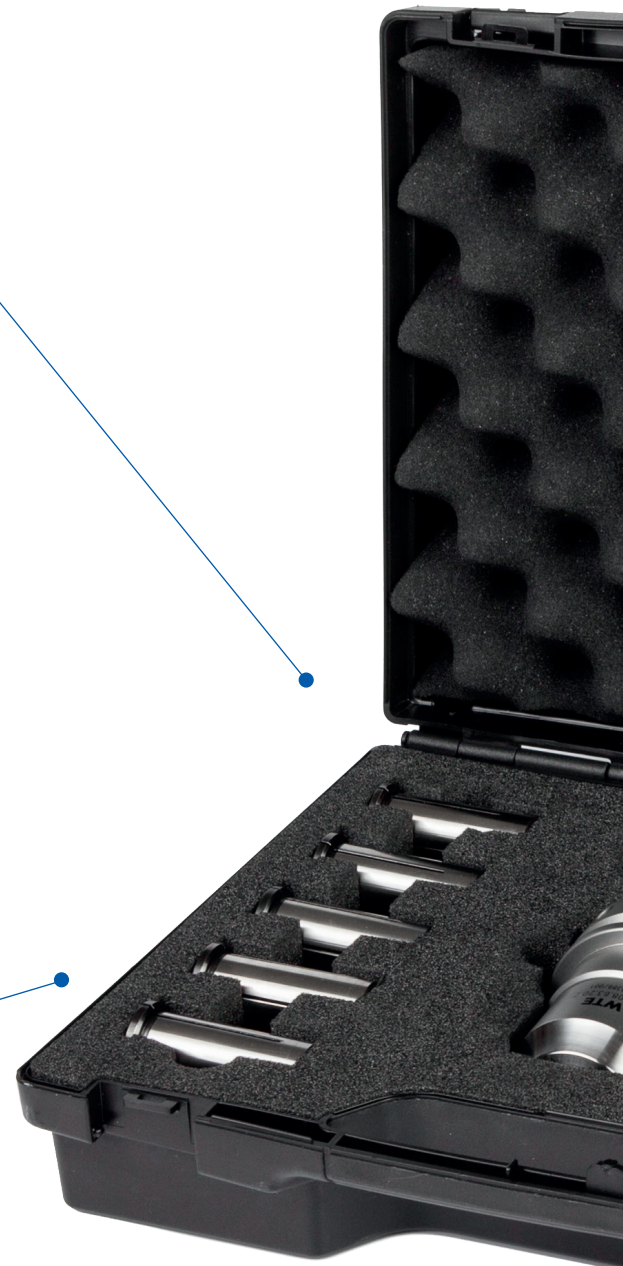
Easy and fast clamping

ADVANTAGE NO. 2

All standard tools can be
clamped

6 different diameters in one
set

Minimum clamping force of
550 nM



Our arguments make the difference!
Ideal for heavy machining, fast set-up times,
extremely high holding forces...



ADVANTAGE NO. 3

Long tool life

Optimum run-out capabilities
< 3 µm



ADVANTAGE NO. 4

Available in different shank forms



SK, HSK-A 63, BT und PSC

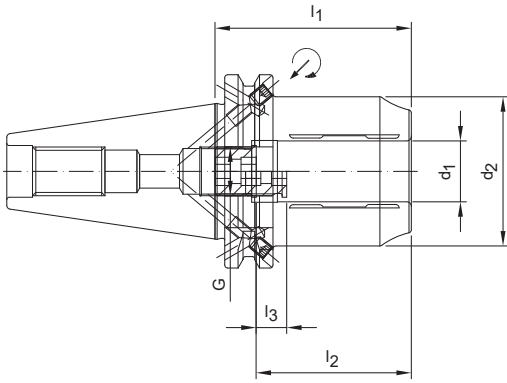
ADVANTAGE NO. 5

Maximum flexibility with usage of reduction sleeves. Set includes 5 reduction sleeves (Ø 6, 8, 10, 12, 16 mm)



Starter-Kit: HPH - High Performance Holder SK40 short heavy duty design

ISO 7388-1, Form AD/AF (prev. DIN 69871-AD/B)
incl. 5 reducing sleeves (Ø 6, 8, 10, 12, 16 mm)



Nominal size SK	Dimension					G	sw	Weight [kg]	Order designation	Order No.
	d_1	d_2	l_1	l_2	l_3					
40	20	49	64,5	51	10	M16x1x13,5	8	1,4	99.408.0002	30645506



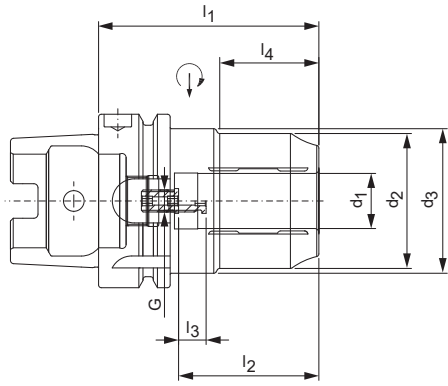
Dimensions in mm.

Basic form AD. Please indicate form AF (prev. B) in your order.

Starter-Kit: HPH - High Performance Holder HSK-A 63 short heavy duty design

DIN 69893-A

incl. 5 reducing sleeves (Ø 6, 8, 10, 12, 16 mm)



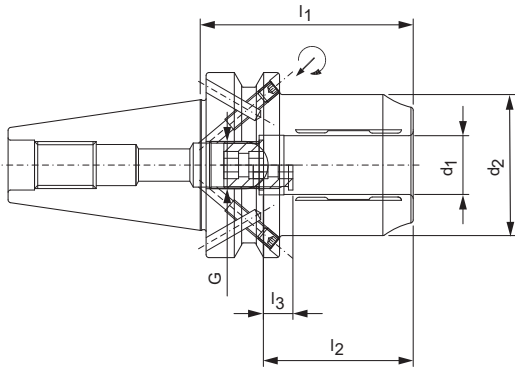
Nominal size HSK-A	Dimension							G	sw	Weight [kg]	Order designation	Order No.
	d_1	d_2	d_3	l_1	l_2	l_3	l_4					
63	20	49	52,5	80	51	10	36	M8x1	3	1,3	99.408.0001	30645501



Dimensions in mm.

Starter-Kit: HPH - High Performance Holder BT40 short heavy duty design

ISO 7388-2 (JIS 6339), Form J, coolant supply as per ISO 7388-2, Form JD/JF
incl. 5 reducing sleeves (Ø 6, 8, 10, 12, 16 mm)



Nominal size BT	Dimension					G	sw	Weight [kg]	Order designation	Order No.
	d_1	d_2	l_1	l_2	l_3					
40*	20	49	72,5	51	10	M16x1x13,5	8	1,4	99.408.0003	30645512

* Also available as BT-FC 40 with facecontact.

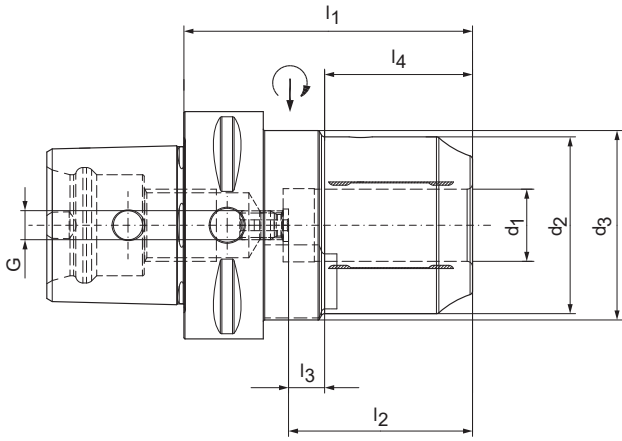


Dimensions in mm.

Basic form JD. Please indicate form JF (prev. B) in your order.

Starter-Kit: HPH - High Performance Holder PSC-63 short heavy duty design

According to ISO 26623-1, IK
incl. 5 reducing sleeves (Ø 6, 8, 10, 12, 16 mm)



Nominal size PSC	Dimension							G	sw	Weight [kg]	Order designation	Order No.
	d_1	d_2	d_3	l_1	l_2	l_3	l_4					
63	20	49	52,5	80	51	10	41	M8x1	3	1,4	99.408.0008	30965537





Your specialist for
high accuracy chucks

Hydraulic Chucks
HPH - High Performance Holder
Shrink Chucks
Precision CNC Drill Chucks
Standard NC Drill Chucks
MICRO Universal Chucks
Services

wte.mapal.com

